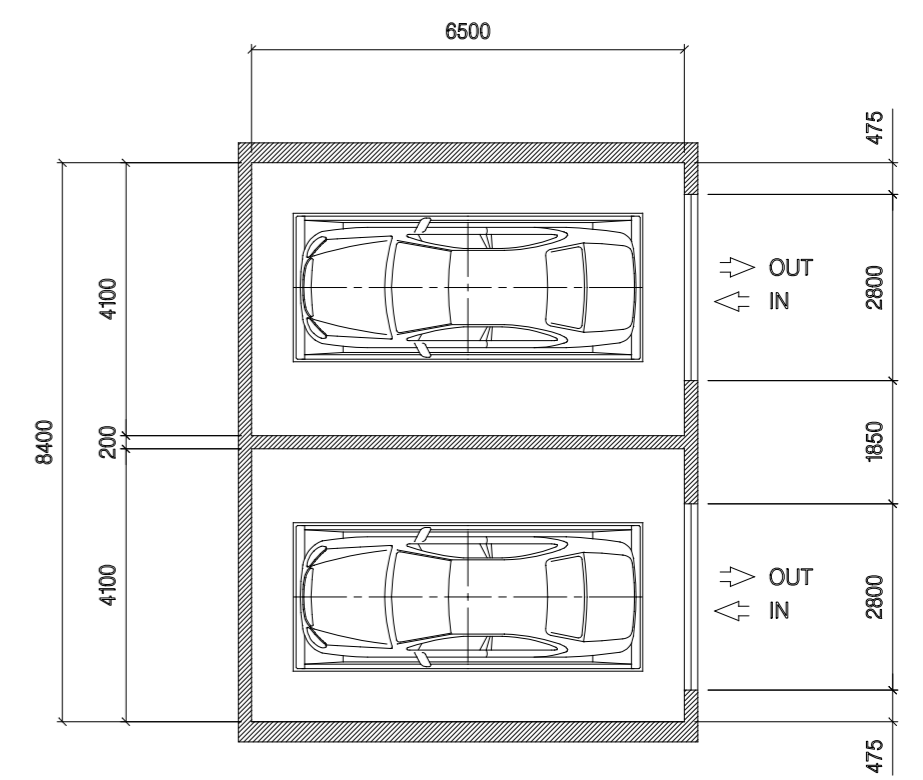
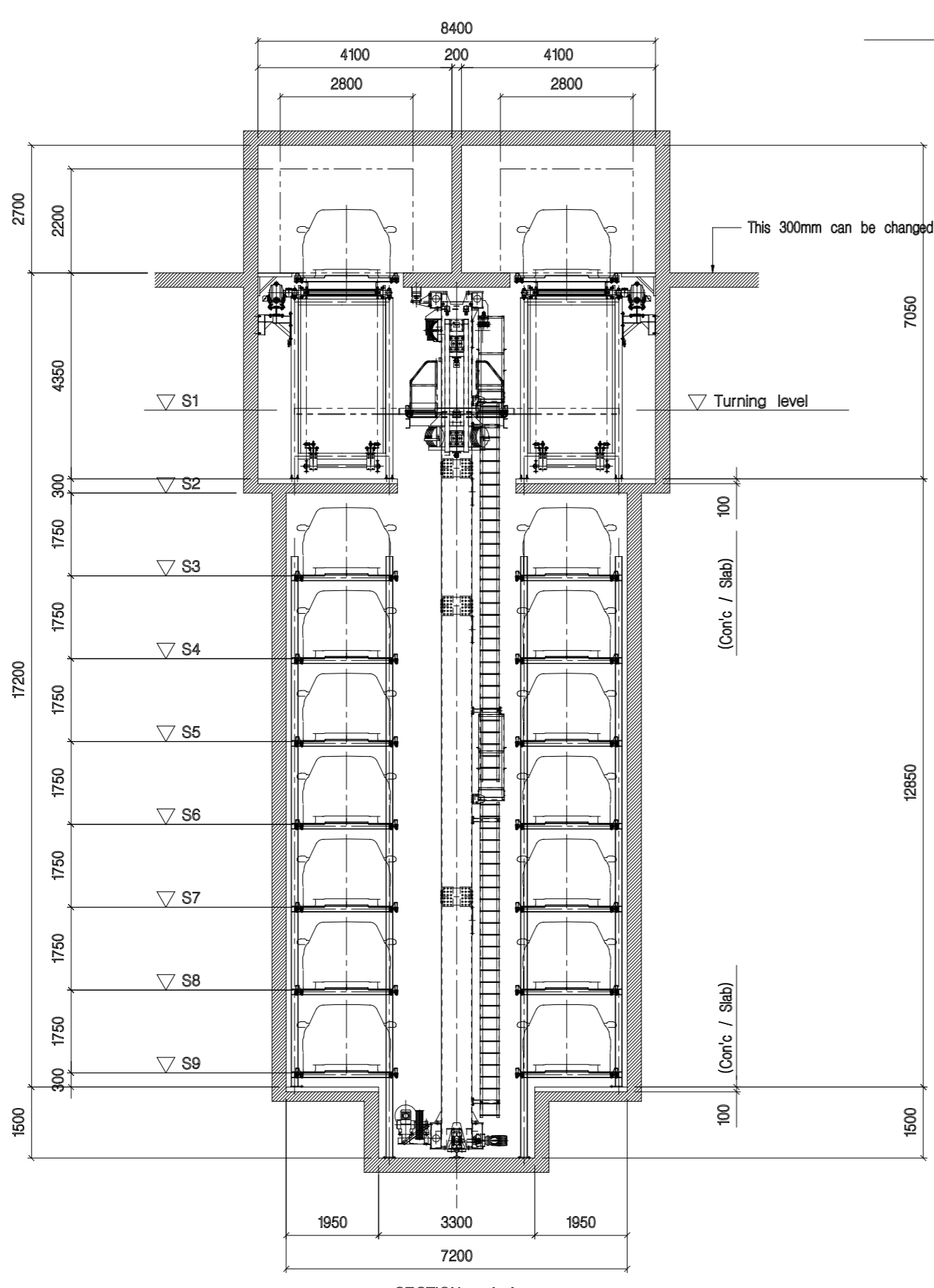


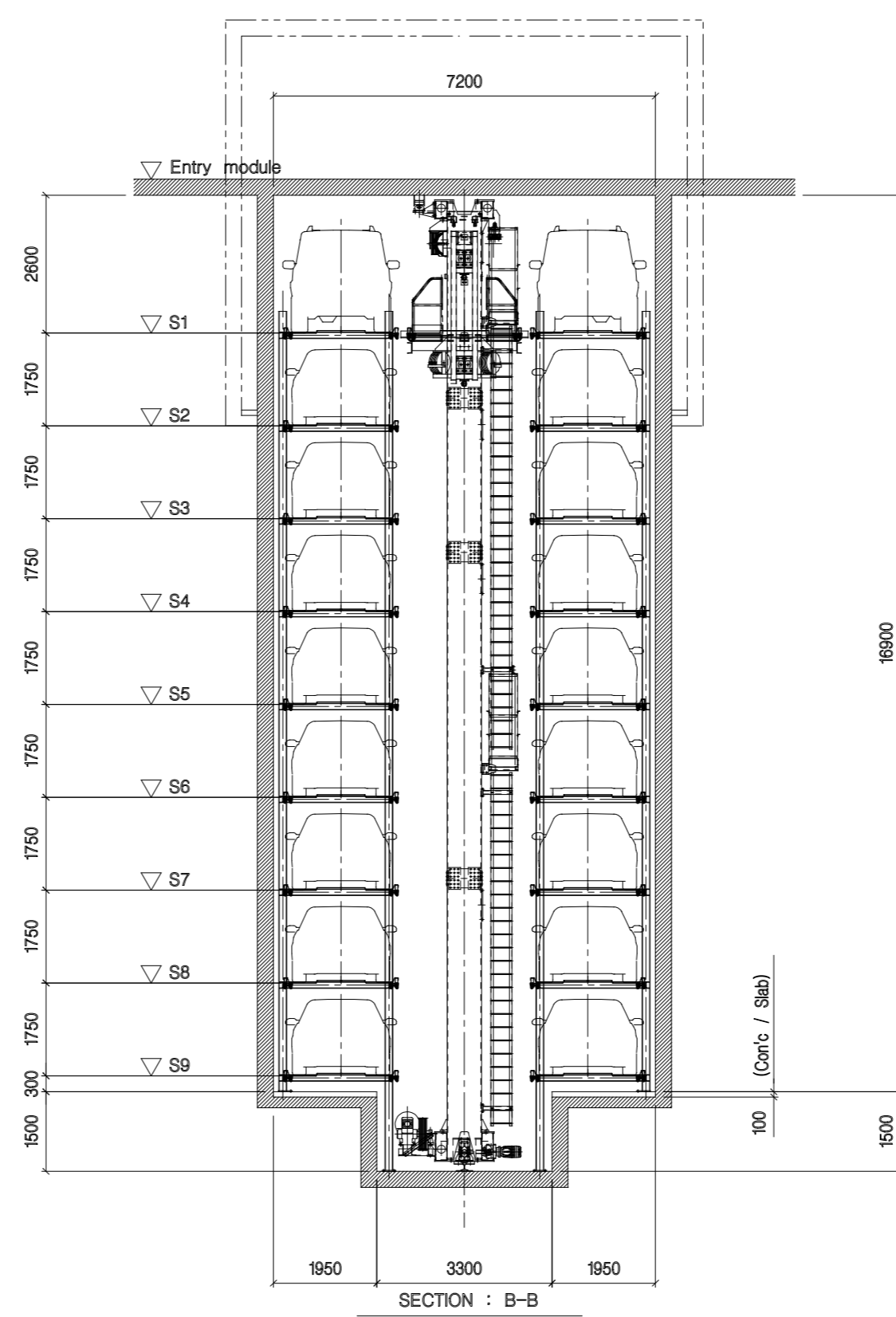
S1 PLAN



ENTRY MODULE PLAN



SECTION : A-A



SECTION : B-B

SPECIFICATION				
SYSTEM CONTROL	OPERATION : TOUCH SCREEN MOTOR CONTROL : INVERTOR			
Q'TY OF CARS	104 BAYS			
CAR SIZE	SEDAN & STATION WAGON			
	LENGTH	5100 MM	MIRROR 2100 MM	
	WIDTH	1900 MM		
	HEIGHT	1550 MM		
	WEIGHT	1900 KG		
	4WD			
STACKER	4WD			
	CART	MOTOR	7.5 KW x 4P	
		SPEED	60 M/min	
	HOISTING	MOTOR	18.5 KW x 4P	
		SPEED	60 M/min	
	TRAVELING	MOTOR	1.5 KW x 4P	
SPEED		28 M/min		
ENTRY MODULE	LIFTING	MOTOR	11 KW x 4P	
		SPEED	25 M/min	
TURNTABLE	MOTOR	1.5 KW x 4P	SPEED	2.5 R.P.M/min
ELECTRIC SOURCE	AC 3Ø 4P 415V 50Hz			

THIS INFORMATION IS CONFIDENTIAL AND PROPERTY OF DRS CAR PARKING SYSTEMS AND IT IS RELEASED ON CONDITION THAT NONE OF THE INFORMATION SHALL BE DISCLOSED TO ANY THIRD PARTY OR REPRODUCED IN WHOLE OR PART WITHOUT THE PRIOR WRITTEN CONSENT OF DRS CAR PARKING SYSTEMS



DRAWN	APPROVED	CLIENT	161 CLARENCE ST. SYDNEY	GENERAL TOLERANCE	IS 919-1
rakesh		TITLE	STACKER PARKING SYSTEM (104 BAYS)	SCALE	1:80
06/06/2018		DWG.No.	IS 919-1	VER.	SHEET

DRS Car Parking System deserves all rights on this drawing. Reproduction, partial or total, without the written authorization of DRS Car Parking Systems is forbidden.